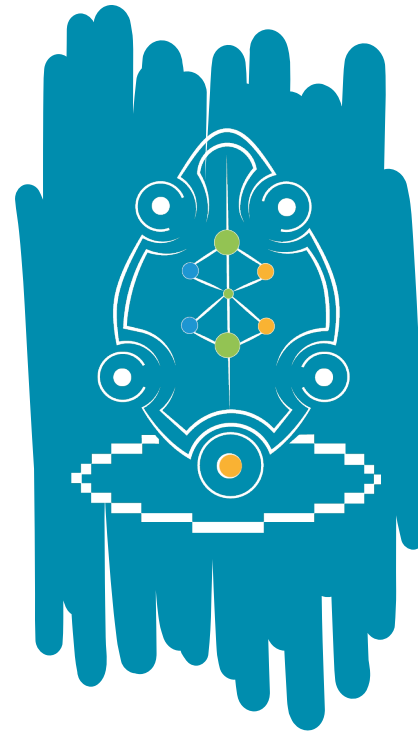


# BULMA Solution B2B Offers



Shaping today's world to better anticipate and respond to contemporary and future Corporate's HR challenges

**BULMA Solution is tailored to your Company.**

**Each pack offers exclusive benefits and adapts perfectly to your needs, simplifying your management for improved returns.**

**Whatever the size of your business, BULMA Solution System with its Unique Data Modeling based on Neurological AI and Deep Learning, can be integrated into any Private or Public Organization.**

# BULMA SHED Watch Sharing an Unique Safety Management Experience

Use for



S - Safety



H - Health



E - Efficiency



D - Danger



This **SOS button**, already included in BULMA Solution applications, will allow right or left-handed remote workers to urgently report worrying and unusual situations, such as **health problems requiring an emergency response, a crime at home or an environmental or weather-related disaster...**

**SOS button** reports the danger for the remote workers, immediately putting them **in contact with their Corporate's HR** during remote working hours, who instantly take appropriate measures by contacting the emergency services.



This **smart watch** will be directly **linked to the emergency services as well**. It is also a valuable and complementary device that offers BULMA Solution to keep the Company's remote Workers safe. It will be worn on the Employee's wrist for their safety.

These two factors offer comprehensive protection for the Company's travelling or remote Workers.

This means that Companies can ensure the physical safety and well-being of their remote Employees.



# BULMA'NIMALS

Sharing an Unique Collaborative Experience

Use for

Happiness

Well-Being

Team Building

Mental Health



Generated by BULMA Solution's AI, with the aim of creating a cohesive workspace and thus strengthening the relationships between the company's talents.

Enchanting BULMA'NIMALS offers Corporate Unique, immersive experience and the exceptional opportunity to dive in a universe populated by IA - Imaginary Animals thereby increasing the value of the company.

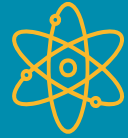
*Taking advantage of this type of engineering within the Organization enables us to remain attractive in terms of both recruitment and social life.*



# V'GER - AIRH

Sharing an Unique Experience with our HR Meca-Robot

Use for



Eco Responsibility



Time Management



Inclusivity



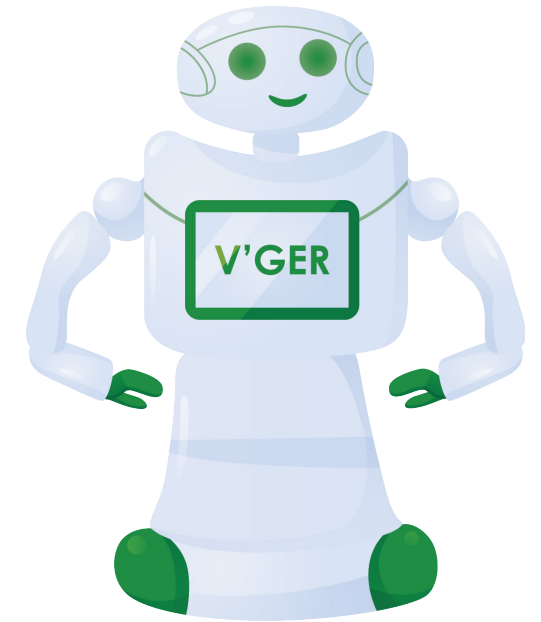
Safety

Intelligent Assistant for Human Resources, strengthens this department by enhancing the Social Capital Values in a Company through our Unique data modeling materialized by Synergy and BULMA Solution's Who'sWho, thanks to its integrated Quantum Server.

Its arms are able to project holograms, it interacts using ASL or LSF and Autism for more inclusivity and safety.

V'GER offers unrivalled AI-powered support for Corporate's HR, automating tedious administrative processes acting as a Social Manager, or creating the ideal device for monitoring projects and tasks during team ventures, enabling them to focus on more strategic activities.

It will also improve the hiring process by reducing stress, with attention now focused on a robot and no longer on people, encouraging improved interaction between parties.



*It will help you create an immersive professional experience.*

# VERA

## Sharing an Unique Proactive Work-Life Experience

Use for



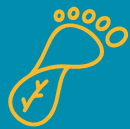
Talent Acquisition Management



CSR



Formation



Carbon Footprint

With VERA, now, no lost data; employees' work are recorded and stored in the event of departure, quiet quitting, sickness, retirement, accident or death. This ensures a reduced stress and costs for Company.

She plays a qualitative role in promoting and advising consumers on the company's products.

VERA identifies employees' specific training requirement and needs consequently alerting the Human Resources department, which will consult BULMA Solution catalog to maintain and perfect the employee's skills.

The evaluation of technical skills prior to hiring will highlight the candidate's capabilities and reinforce information in their Metronome.

Comfort and quality of employees' work-life are ensured by VERA suggesting instant improvements and as well evaluating their carbon footprint to maximise your Company's performance in this Eco-world.

This proactive and ongoing support helps maintain a high level of Human & Social Capital or at least one that meets the Company's expectations.



*Discover Our Packs*



# BULMA Swing Pack



1 - 999 Employees

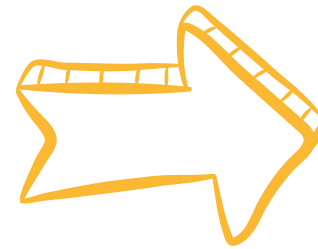
With the BULMA SWING package, you'll have BULMA Solution System at your disposal up to:
Full Access to all Applications
Up to 999 Digital Passports + Synergy
Up to 50 BULMA SHED Watches + Personalised quote according requirements
1 V'GER Robot
VERA
Creation of BULMA'NIMALS
Unlimited Access to the Who's Who Directory
Licence / month (3-year contract)



# BULMA Funk Pack



1 000 - 10 000 Employees



With the BULMA FUNK package, you'll have BULMA Solution System at your disposal up to:

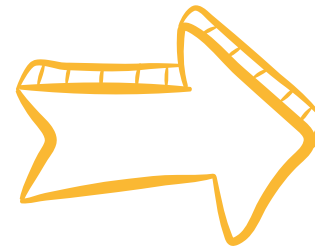
Full Access to all Applications
1,000 to 10,000 Digital Passports + Synergy
51 to 100 BULMA SHED Watches + Personalised quote according to requirements
2 to 5 V'GER Robots depending on the workforce
VERA
Creation of BULMA'NIMALS
Unlimited Access to the Who's Who Directory
Licence / month (3-year contract)



# BULMA Pop Pack



10 001 - 100 000 Employees



With the BULMA POP package, you'll have BULMA Solution System at your disposal up to:

Full Access to all Applications

10,001 to 100,000 Digital Passports + Synergy

101 to 1000 BULMA SHED Watches + Personalised quote according to requirements

6 to 10 V'GER Robots depending on the workforce

VERA

Creation of BULMA'NIMALS

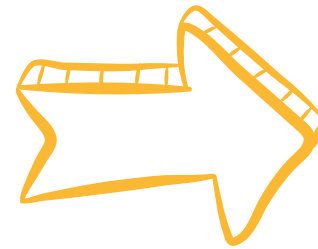
Unlimited access to the Who's Who Directory

Licence / month (3-year contract)

# BULMA Rock Pack



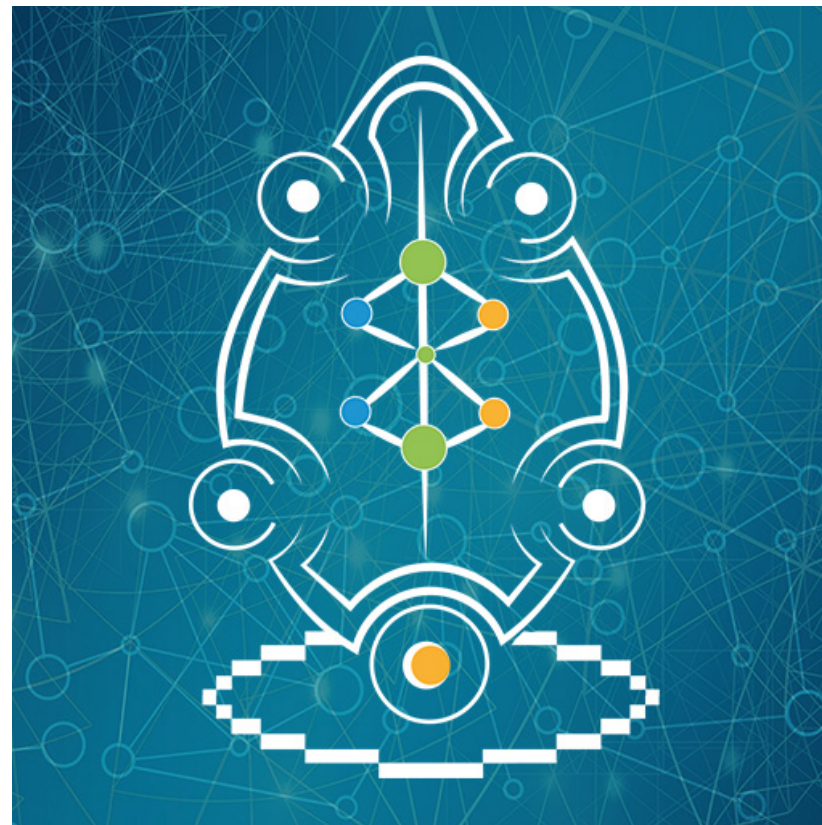
+ 100 001 Employees



With the BULMA ROCK package, you'll have BULMA Solution System at your disposal up to:
Full Access to all Applications
100,001+ Digital Passports + Synergy
1,001 to 10,000 BULMA SHED Watches + Personalised quote according to requirements
11 to 15 V'GER Robots depending on the workforce
VERA
Creation of BULMA'NIMALS
Unlimited Access to the Who's Who Directory
Personalised quote (3-year contract)

# Economic Intelligence + Human Resources + Deep Learning To enhance the Nation's Value

=



*This time saved, allows Corporates' HR to focus on added-value tasks, improving the Company's efficacy and profitability.*